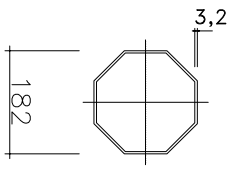
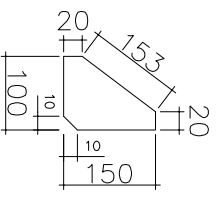


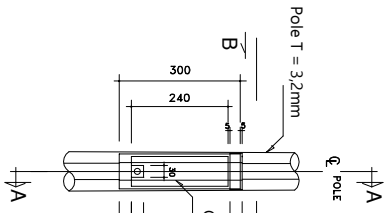
Det 1 Top Of Pole
SCALE 1 : 25



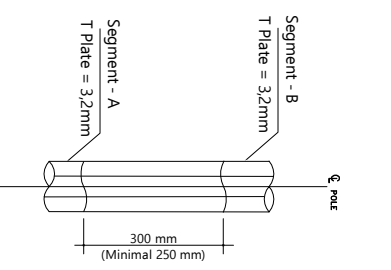
Det 2 Bottom Of Pole
SCALE 1 : 25



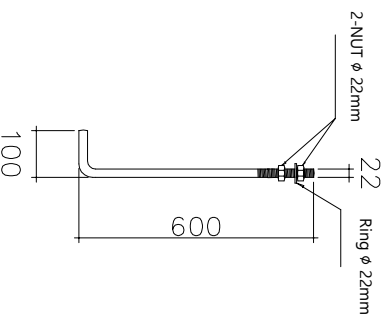
Det 3 Rip Plate
SCALE 1 : 25



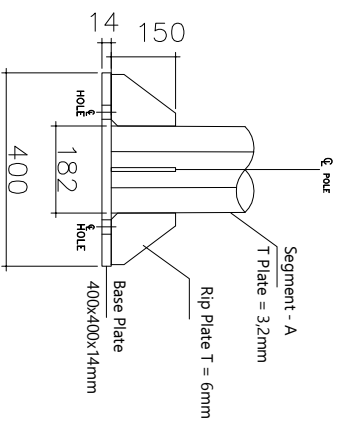
Det 4 Pole
SCALE 1 : 25



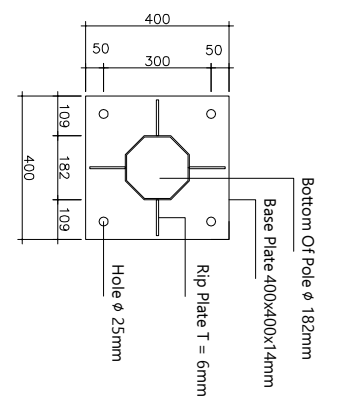
Det 5 Slip Joint
SCALE 1 : 25



Det 6 Anchor Bolt
SCALE 1 : 25



DET 1 Base Plate
SCALE 1 : 25



DET 1 Base Plate
SCALE 1 : 25

TIANG PJU H-13M DOUBLE PARABOLE
SCALE 1 : 25
Octagonal

KETERANGAN

STANDART MUTU :

- ISO 9001 : 2008
- Plate Baja : ST 41 / SS 400
- Welding : Las Listrik
- Finishing Hot Dip Galvanize
- Segment System Slip Joint
- Segment A = 5000mm
- Segment B = 6000mm
- Segment C = 2600mm
- Bottom Of Pole ϕ 182mm
- Base Plate 400x400x14mm

PRODUCTION :



PT. HELORI GRAHASARANA

JOB TITLE :

TECHNICAL SPECIFICATION

CLIENT :

CV. DHIA ADIKA UTAMA

PRODUCT :

**TIANG PJU OCTAGONAL
H-13M DOUBLE PARABOLE**

DRAWING TITLE :

DATE	CLIENT APPROVAL	APPROVAL

CAD	DESIGN	CHECK
Auto CAD 2009	Dwi. Y	Efi

DRAWING NO :	SHEET NO :
RL-DP-HT3	SHEET 1 OF 1